

LIFTKING®

LK-150R Telescopic Forklifts



MOVING YOUR FUTURE

LK•150R Telescopic Forklifts

STANDARD EQUIPMENT

Powershift Transmission — 4 Speed Forward and Reverse; Planetary Drive Axles, Limited Slip Front Axle, Quick Attach Coupler, 60in carriage with 48in forks, Sideshift, Frame Leveling, Rear Axle Oscillation, 4-Wheel Wet Disc Brakes, Parking Brake, Brake-operated Transmission dedutch, Tie down lugs, Tool Box, Cold Weather Engine Start, 12 Volt Electrical System, Roadway Light package, Self Leveling forks, Auxiliary Hydraulic Circuit to End of boom, Hydraulic Joystick Controls, Load sensing Hydraulic System, Four Wheel Drive with Rear Wheel Disconnect, Four Wheel Steer, Crab Steering.

OPTIONAL EQUIPMENT

Enclosed operator's compartment MOPS and ROBS, with two-piece door, complete with heater, defroster fan, front and rear wipers, ergonomic seat with seatbelt. Loose material buckets, short wood grapple up to 1 cord, Tire Handler, Pipe and Pole Fork Carriage with Primary and Secondary Hold Downs, Hydraulic Wiper, Hydraulic Fork Positioning, Suspension seat, AM and FM radio, Air Conditioning, forks from 60in to 96 in, extra work lights, engine air pre-cleaner, outside rear view mirrors, rotating beacon, extra control valve and handle, hydraulic accumulator, tachometer, fire extinguisher, dead man seat, extra manuals — parts, service and operators manual.

LIFTKING®



7135 Islington Avenue
Woodbridge, Ontario
Canada L4L 1V9
Tel: (905) 851-3988
Fax: (905) 851-6396
info@liftking.com
www.liftking.com
Toll Free: 1 888 LIFTKING

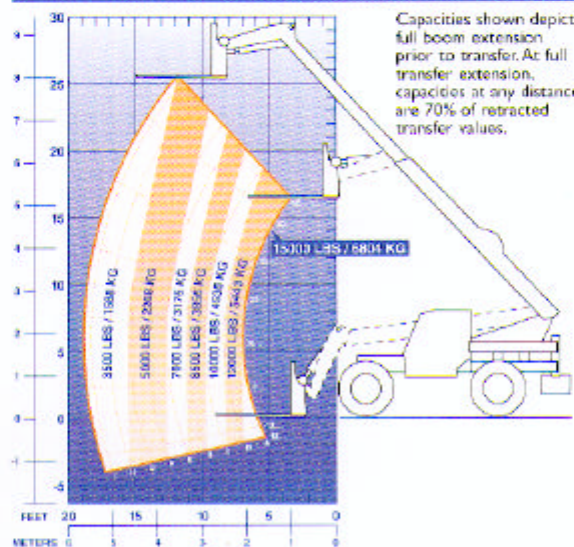
The information contained herein is general in nature and it is not intended for specific application purposes. LIFTKING® reserves the right to make changes in specifications shown, herein, and improvements, or discontinue manufacture at any time without notice or obligation.

SPECIFICATIONS

LK•150R

GENERAL

Type of Vehicle	Lifting LK150R Diesel Telescopic Forklift Truck
Manufacturer	Lifting Industries Incorporated
Rated Capacity	15,000 lbs (6,810 kg) at 24 in (610 mm) Load Center
Length (Less Forks)	21 ft 3 in / 6.5 m
Overall Width	102 in / 2.6 m
Overhead Guard Height	101 in / 2.6 m
Turning Radius	15 ft 6 in / 4.7 m
Max. Lift Height	26 ft 4 in / 8 m
Max. Forward Reach	25 ft / 7.6 m
Load at Max. Height	3500 lb / 1589 kg
Load at Max. Reach	3500 lb / 1589 kg
Ground Clearance	19 in / 48 cm
Max. Speed	30 mph / 48 kmh
Brakes	4-Wheel, hydraulic wet disc
Weight, No Load	28,840 lbs / 12,930 kg
ENGINE:	Diesel Cummins, Model B5.9-C, 6 cylinders
TRANSMISSION:	Powershift, 4 speeds forward/reverse
AXLES:	Planetary Drive Axles, Limited Slip Differential
TIRES:	17.5 x 25 Sure Grip Loader



Maximum boom load capacities at 24" load center, for lift and reach positions in pounds and feet with metric conversions.

Manufacturer's recommended capacities are in conformance with ANSI/ASME B56.6 stability tests using standard homogeneous cubes 4' x 4' x 4'.

Manufacturer's recommended loads and angles shown are at the horizontal center of gravity of the above cube. Capacity adjustment must be made for extended load centers and other variations of load size, etc.

Rated lift capacities shown are with machine on a firm, level surface with undamaged, properly inflated, ballast-filled tires.

Your local authorized dealer

Re-order Number: 150R0700



The LK150R is equipped with an enclosed cab, complete with heater, defroster fan, front and rear windshield wipers, ergonomic seat with seat belt, two-piece door and fan.



The side mount cab provides the operator with high visibility all around. It also allows an easy access to the operator compartment.



A wide variety of attachments — such as buckets, man baskets, pipe and pole grapples, pulpwood grapples and fork positioners — are available to make the LK150R an even more versatile forklift.

