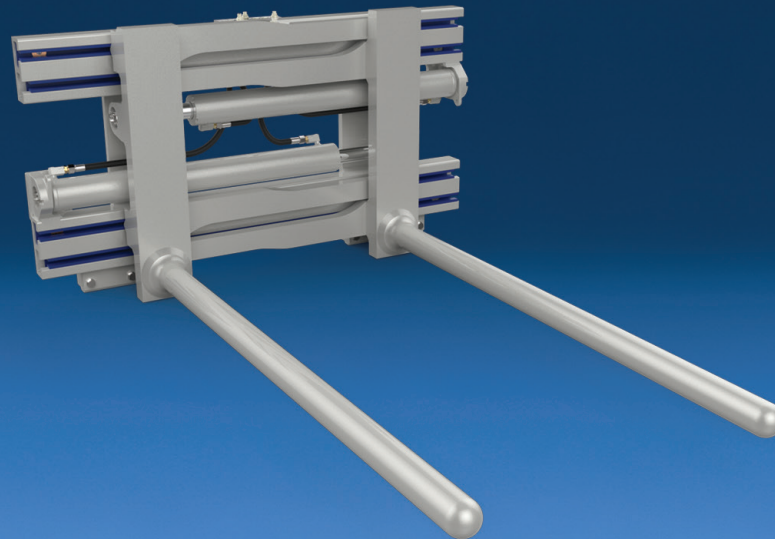
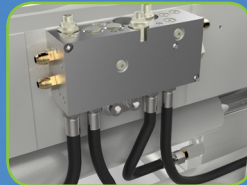


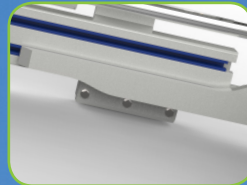
# Textile Roll Handling Made Easy



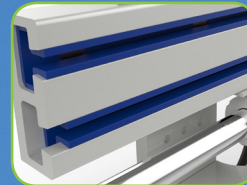
Carriage centering key for precise and secure mounting



Easy access hydraulic valve for serviceability



Hardened steel wear strips protects frame from damage



Lube-free, full-width lip over UHMW bearings provide superior durability and service life



Optional cylinder bumper protects the hydraulic lines and cylinders from impact and debris

## APPLICATIONS

Designed primarily for the textile industry, Cascade Bar Arm Attachments are used for handling rolls of cloth material such as towels, linens and denim.

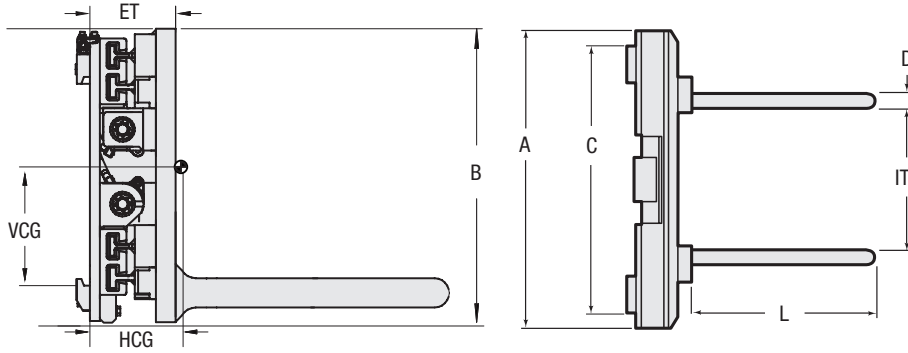
The round bar arms of the Bar Arm Attachment can either cradle single or multiple rolls between the arms, or enter the core to handle the roll. The round surface and end of the bar arms eliminate any tearing, snagging or puncturing of the material that may occur with standard forks.

## FEATURES

- Lube-free, full-width lip over UHMW bearings for long life.
- Rounded bar end prevents product damage.
- Top-mounted cartridges and test ports in valve for ease of service.
- Industry leading visibility.
- Bolt-on, frame wear strips with front facing hardware provides maximum protection and easy replacement.
- High-strength, hot extruded steel frame.
- Carriage centring key for precise and secure mounting.
- Smooth high-speed performance.
- Rugged lightweight construction for maximum capacity retention.
- Flow divider for equal arm movement.

## OPTIONS

- Custom bar arm lengths, diameters and tip configurations.
- Centered or inset bar arm mounting locations.
- Various mounting options available.
- Quick-disconnect lower hooks.
- Custom frame widths.
- Custom opening ranges.
- Cylinder protection bumper.
- Steel hydraulic valve guard.
- Consult Cascade for customized solutions to fit your application.



Catalog Order No.	Capacity@ 47" (1200 mm) Load Center		Overall Width A	Opening Range ITI	Boom Length x Diameter DxL	Weight		Effective Thickness ET	Horizontal Ctr. of Gravity HCG	Vertical Ctr. of Gravity VCG	Frame Height B	Hook Spread C	Mounting Class
	lbs	kg				lbs	kg						
<b>Sideshifting</b>													
100G-BOS-4A-0005	5,500	2,500	49.0"	16.5" - 70.9"	4.0"x71.0"	2,127	967	10.4"	12.0"	10.7"	36.0"	40.0"	IV
140G-BOS	7,715	3,499	58.0"	22.0" - 86.6"	----- Consult Cascade -----								

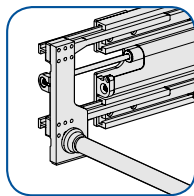
**HYDRAULIC FLOW & PRESSURE**

Model	Recommended Attachment Operating Pressure (psi)	Maximum Delivered Truck Pressure (psi)	Flow Min-Rec-Max (gpm)
100G	1455	3630	10-15-20

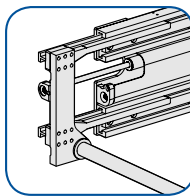
**HYDRAULIC FUNCTIONS**

Model	Hydraulic Functions	Truck Aux. Valves Required
All	2	2

**OPTIONS**



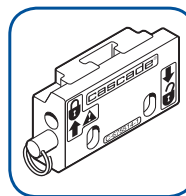
Centered (standard)



Inset

**BAR ARM OPTIONS**

Location of arm bars will effect opening range of attachment.



**Quick-Disconnect Mounting Hooks**

Quick-Disconnect Mounting Hooks increases versatility by allowing the attachments to be quickly exchanged.



**Steel Hydraulic Valve Guard**

Used to protect hydraulic valve from falling debris.



**Cylinder Protection Bumper**

High strength steel bumper protects hydraulic lines and cylinders from impact and debris.